

VOXHALL

VENUE SPECS & INFO

TABLE OF CONTENT

INDEX	page 1
CONTACT INFO	page 2
GENERAL INFO	page 3
SOUND SPECIFICATION	page 4
LIGHT SPECIFICATION	page 7
HANGINGPLOT	page 8
DRIVING INSTRUCTIONS	page 9
PHOTOS OF VENUE	page 10

VOXHALL IS A NONSMOKING VENUE - PLEASE RESPECT THAT!

VOXHALLS VISION

To maintain our position among the best venues in Europe!

VOXHALLS MISSION

VoxHall is committed to the presentation and promotion of a cultural programme with a high quality level. VoxHall focuses on music of today that appeals to the particular and curious consumer of culture in general.

VOXHALLS VALUES

Volunteers, commitment, trust and competent handling of all of our activities caters to the best possible environment for the band, the audience and employees.

VENUE:	Voxhall	TELEPHONE:	+45 87309797
ADDRESS:	Vester Allé 15		
CITY:	DK - 8000 Aarhus C		
WEB:	www.voxhall.dk	EMAIL:	voxhall@fondenvoxhall.dk

PRODUCTION:	Søren Hermansen	TELEPHONE:	+45 87309794
EMAIL:	production@fondenvoxhall.dk		
CELL PHONE:	+45 26839732 (for emergency only)		

SOUNDTECH:	Kenneth Andersen	TELEPHONE:	+45 87309797
		EMAIL:	sound@fondenvoxhall.dk
LIGHTTECH:	John Hedegaard	TELEPHONE:	+45 87309797
		EMAIL:	light@fondenvoxhall.dk

DRESSING ROOMS:	<p>Voxhall has 3 dressingrooms. All rooms have comfortable seating (couches and chairs), tables, electrical outlets, full length mirrors, coffee / the table with kettle, cable TV, iron & ironing board.</p> <p>Each room has a codelock. The code for the dressing room will be provided to the tourmanager at load in.</p>
INTERNET:	<p>Voxhall have wireless internet access throughout the venue. The code for the wireless will be provided upon request during advance or at load in</p>
ACCESS TO STAGE:	<p>Dressing rooms are accessible to the stage without passing through public areas.</p>
SHOWERS:	<p>2 showers in connection to the dressing rooms. All with hot and cold running water.</p>
TOILETS:	<p>2 toilets in connection to the dressing rooms.</p>
WASHING FAC.:	<p>Voxhall has a washer and a dryer with detergent. It is free to use. Note: No use after midnight!</p>
LOAD IN:	<p>Direct on stage by slope from trailer or truck.</p>
STAGE:	<p>Width x Depth x Height x Clearance 9 x 5,5 x 0,9 x 4,3 Meters 29,5 x 18 x 2,95 x 14,1 Ft</p>
BARRIER:	<p>We supply barriers in front of stage. Please ask for picture if necessary.</p>
LANDLINES:	<p>Power for nightliners is located around the corner from the load in door. Voxhall supply the following: 2 x 230 V (blue CEE) 1 x 32A CEE 1 x 16A CEE</p>
PROD. OFFICE:	<p>We can supply you with a desk in our office with access to copier and wireless internet. A key for the office will be provided to tourmanager at load in.</p>
PARKING:	<p>On parking lot in front of the load in door. The parking lot is open 24/7 For more info, please see the parking map provided upon request during advance. The code for the parking lot will be provided during advance or at load in.</p>
CAPACITY:	<p>700</p>
DINNER:	<p>We will provide you with a buyout for dinner. Plenty of options nearby.</p>
MERCHANDISE:	<p>Merch to be sold from the cafe stage. We provide lights and tables. We take no commission!</p>
STAGEHANDS:	<p>We will supply sufficient numbers of stagehands depending on the size of the production.</p>
RUNNER:	<p>We don't supply runner.</p>

SOUND SYSTEM

SPEAKER SYSTEM (FLOWN):

2 x 3 TurboSound TFL-760HT High / high-mid / mid (Main PA + Balcony Fill)
2 x 2 TurboSound TCS-612 Full-range (downfill)
4 x TurboSound TSW-718 (Subs)
2 x TurboSound TCS-612 Full-range (Centercluster)
2 x Function One F55 (Delay under Balcony)
2 x TurboSound TCS-30 Full-range (Balcony)
2 x Turbosound TCS-56 Full-range (Delay)
1 x LAB 1200C, 1 x LAB 2002, 1 x LAB 4000 (Downfill)
4 x LAB C68:4 (Main PA + Balcony Fills)
3 x TurboSound LMS-D6 (TFL-760HT & TSW-718)
1 x TurboSound LMS-660 (TCS-612 - Centercluster)
2 x TurboSound LMS-D24 (TCS-612, Delay)

FRONT OF HOUSE:

1 x Midas XL 4, 48ch
1 x T.C Electronics M5000, Digital reverb
1 x T.C Electronics M3000, Digital reverb
1 x T.C Electronics M2000, Digital reverb
1 x T.C.Electronics 2290, Digital delay
1 x Yamaha SPX 990, Multieffect
6 x DBX 160A, Compressors
2 x BSS DPR 404, Quad (4ch) Compressors/De-Esser
5 x Drawmer DS201, Dual Gate
1 x T.C Electronics EQ Station, 8 ch. Graphic/Parametric EQ (L&R)
1 x Denon 620F, Combi CD / Tape
1 x Denon 620F, Combi CD / Tape
1 x ASL Intercom system FOH – Mon.

MONITOR SYSTEM (STAGE LEFT):

1 x Soundcraft VI3000
10 x TurboSound TFM-330, Biamped Wedges (Incl. Cue Wedge)
4 x LAB 10.000Q
1 x LAB 1200C, 1 x LAB 2002 (SideFills)
1 x Klark Helix DN9848 4x8 Crossover (Sidefills)
1 x Intercom system, Mon – FOH

MICROPHONES:

9 x Shure Beta 58A, 2 x Shure Beta 52
1 x Shure Beta 91, 4 x Shure Beta 98
6 x Shure SM 58, 10 x Shure SM 57, 4 x Shure B57A
3 x Shure SM 94, 3 x Shure KMS 137, 1 x Beyer M88
3 x Sennheiser MD 421, 1 x Sennheiser C 409, 4 x Sennheiser e604, 1 x AKG D112
2 x AKG 214
2 x AKG 414 ULS
12 x BSS AR 133 mono DI, 4 x Custom made mono DI, 2 x Custom made dual DI

MICROPHONE STANDS:

18 x Tall stand with boom
14 x Short stand with boom
3 x Tall round base stand without boom

POWER:

- 1 x (3x63A) 5 pin 50 Hz CEE HPFI, inhouse PA
- 1 x (3x63A) 5 pin 50 Hz CEE non HPFI, available for recording truck
- 1 x (3x32A) 5 pin 50 Hz CEE HPFI, available for visitors
- 2 x (3x16A) 5 pin 50 Hz CEE HPFI, available for visitors
- 2 x (1x10A) 3 pin 50 Hz CEE HPFI, for backline
- 2 x (1x10A) 3 pin 50 Hz CEE HPFI, for buspower/Landline, placed outside building

RISERS:

- 6 x (1 X 2 Meters carpeted)
- height of risers - 30 cm or 50 cm or 90 cm

SOUND TECHNICIAN CONTACT:

Kenneth Andersen sound@fondenvoxhall.dk +45 87309797

LIGHTS

36 x PAR64 – 1kw (CP61)
8 x PAR64 Floorcan – 1kw (CP61)
6 x 1kw Selecon Fresnell
2 x Martin Atomic 3000 Strobe
2 set ACL (PAR46/28V/250W-No Gelframes)

12 x Robe ROBIN 300E Spot (8 on stage, 4 in frontrig)
8 x Robe ROBIN 300E Wash (on stage)
2,2 kw Dimmers

1 x Avolites Expert Titan

1 x LeMaitre MVS Hazer – DMX control

All connections: CEE og Harting (16 pin)
A good selection of LEE filters.
2 x 5pins DMX for guest
2 x RJ45 (Ethernet) from FOH to Dimmer (straight)
Power for artist lightequipment: 1 x 3x63 Amp. (CEE)
Wysiwyg pre-programming file available at: www.eject.dk/voxhall/lightspecs.htm
All fabrics for stage use must be fireproofed.
Please bring the "white-papers" for the fabric, or bring a small "test-piece"

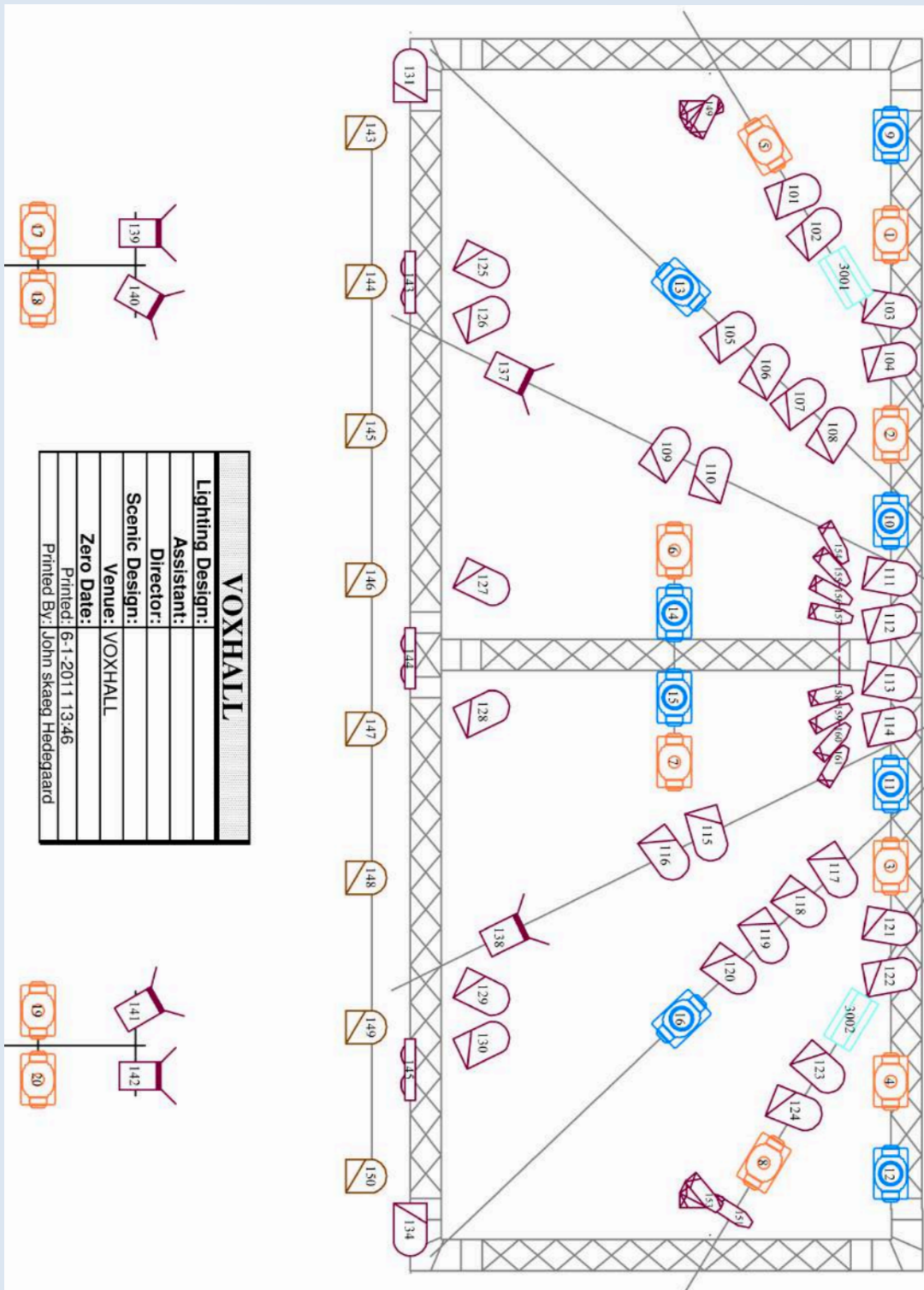
LIGHT DESIGNER CONTACT:

John Hedegaard

light@fondenvoxhall.dk

+45 87309797

VOXHALL HANGINGPLOT



FROM THE SOUTH:

1. Leave highway E45 at exit 50.
2. Turn left at the third light. Streetname: Skanderborgvej/De Mezasvej/Frederiks Alle.
3. Turn left at the sixth light. Streetname: Vester Alle.
4. Turn left at the first street after the first light. Streetname: Museumsgade.

VoxHall is on your left. Landlinepower available around the corner from load in.

FROM THE NORTH:

1. Leave highway at exit 47.
2. Turn left at the end of the exit. Streetname: Viborgvej.
3. Turn left at the end of the road. Streetname: Vesterbrogade.
4. Turn right at the second light. Streetname: Vester Allé.
5. Turn right at the first street after the first light. Streetname: Museumsgade.

VoxHall is on your left hand. Landlinepower available around the corner from load in

DISTANCES:

Aarhus - Copenhagen: 299 km.

Aarhus - Frederikshavn: 170 km.

Aarhus - Hamburg: 330 km.

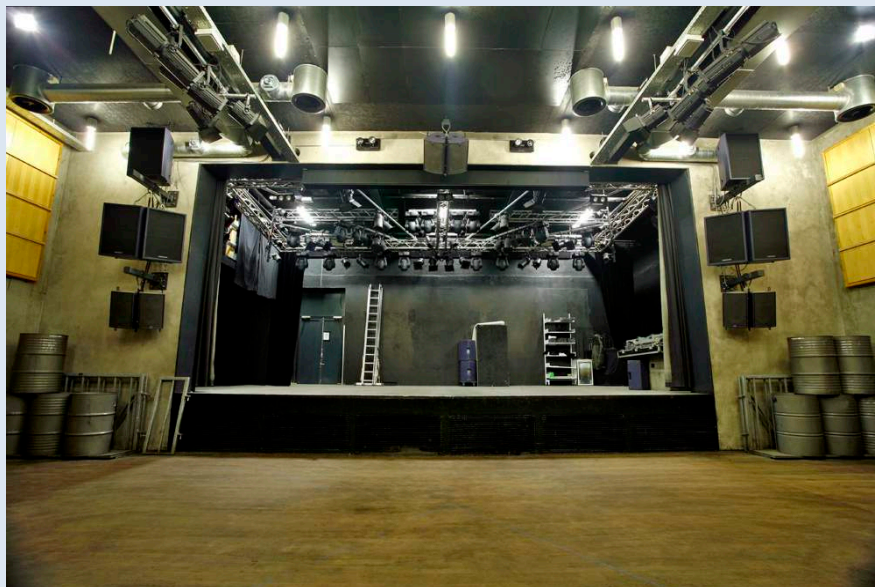
MAP:

Please see www.fondenvoxhall.dk for further details.

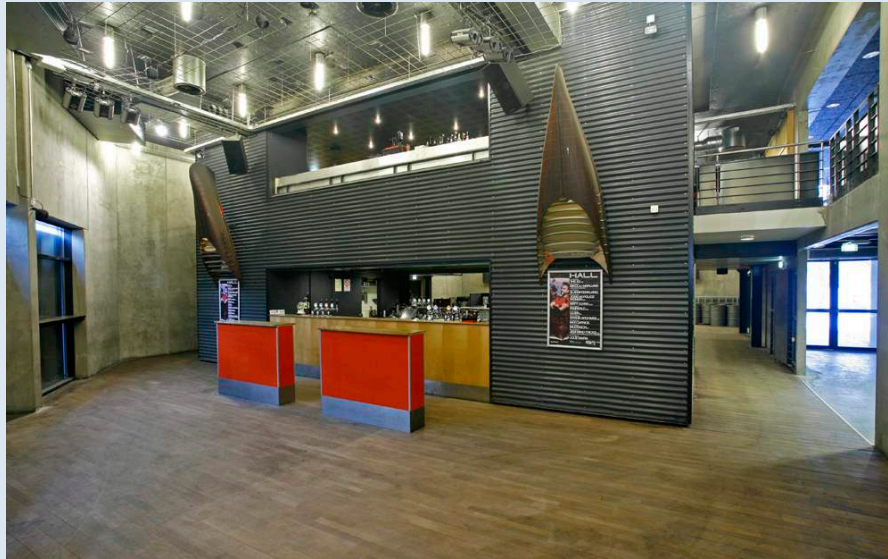
FROM BALCONY



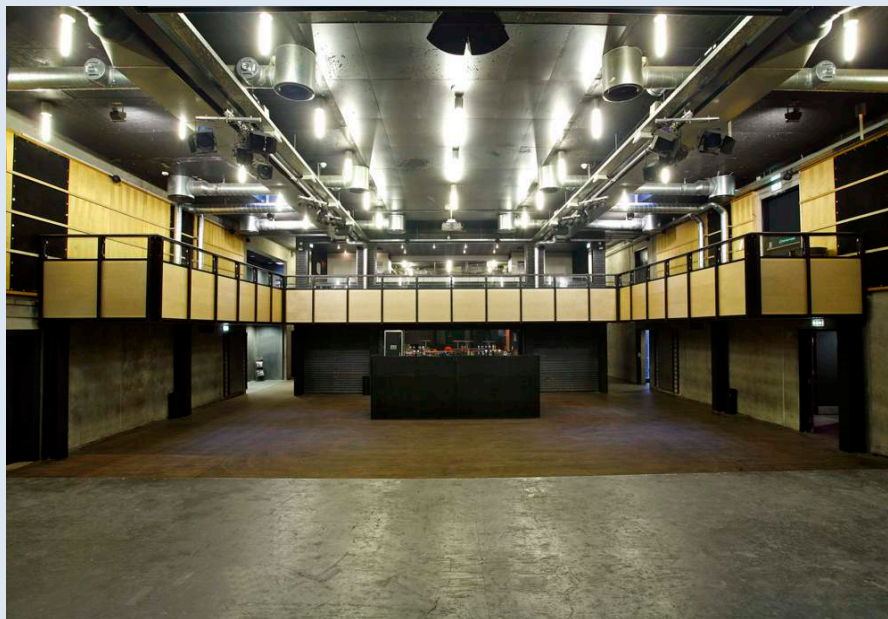
FROM FOH



CAFE



FROM STAGE



DRESSINGROOM



LIVE

